



UTM
UNIVERSITI TEKNOLOGI MALAYSIA

Faculty of
Engineering

INDUSTRIAL AND SYSTEMS ENGINEERING RESEARCH GROUP (ISERG)

School of Mechanical Engineering,
Faculty of Engineering,
Universiti Teknologi Malaysia,
81310 Johor Bahru, Johor.

NICHE AREAS

- Optimization & Data Analytics
- Pattern Recognition for Process Monitoring
- Lean Six Sigma & Quality Engineering
- Ergonomics, Safety & Work Design
- Supply Chain Performance Measurement

SERVICES AND FACILITIES

- Training & Consultancy in the niche areas
- Optimization Software
- Industrial System Simulation Software
- Design of Experiment Software
- Ergonomics Measurement Equipment

FLAGSHIP RESEARCH

- An Intelligent Ant Colony Algorithm for Optimizing Facility Layout, Funded by MOSTI
- EurAsian Network for Product Lifecycle Support and Training (EAPSTRA), Funded by European Commission
- Best Practices by World Class Manufacturing, Funded by Intel Technology Sdn Bhd
- Accident Cost Calculator for Manufacturing Industries, Funded by DOSH
- Sustainable Supply Chain Performance Indicators for Food Industry, Funded by MOE

Researchers

Prof. Dr. Wong Kuan Yew
Head of Research Group
m-wongky@utm.my

Assoc. Prof. Dr. Adnan Hassan
adnan@utm.my

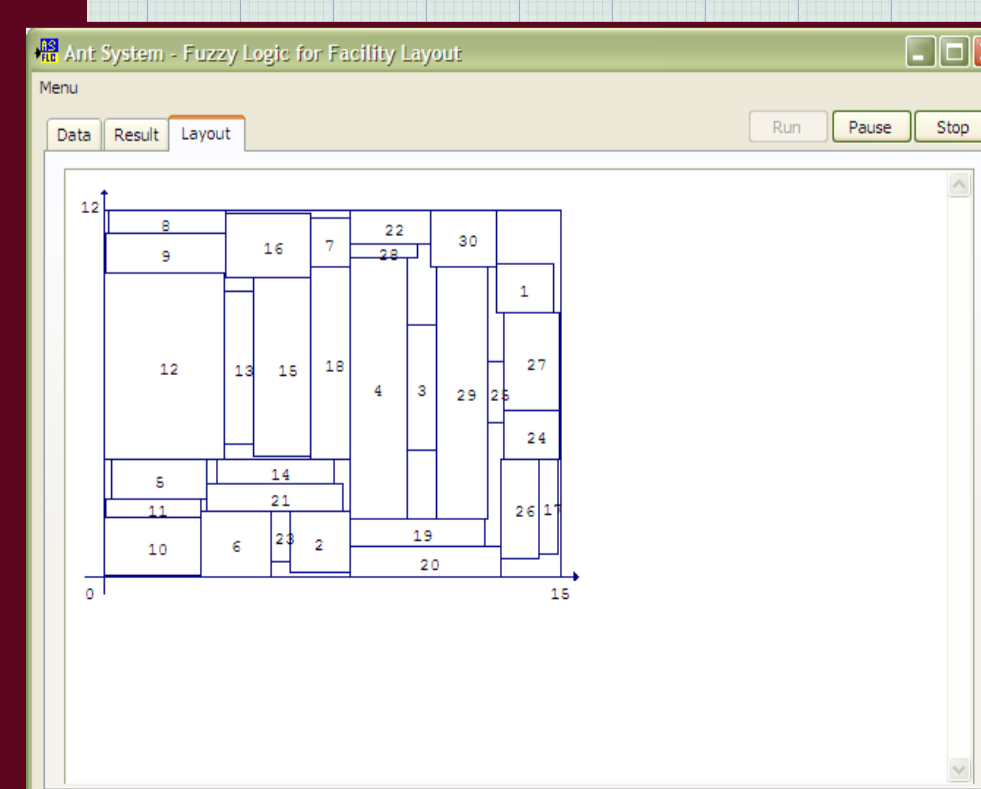
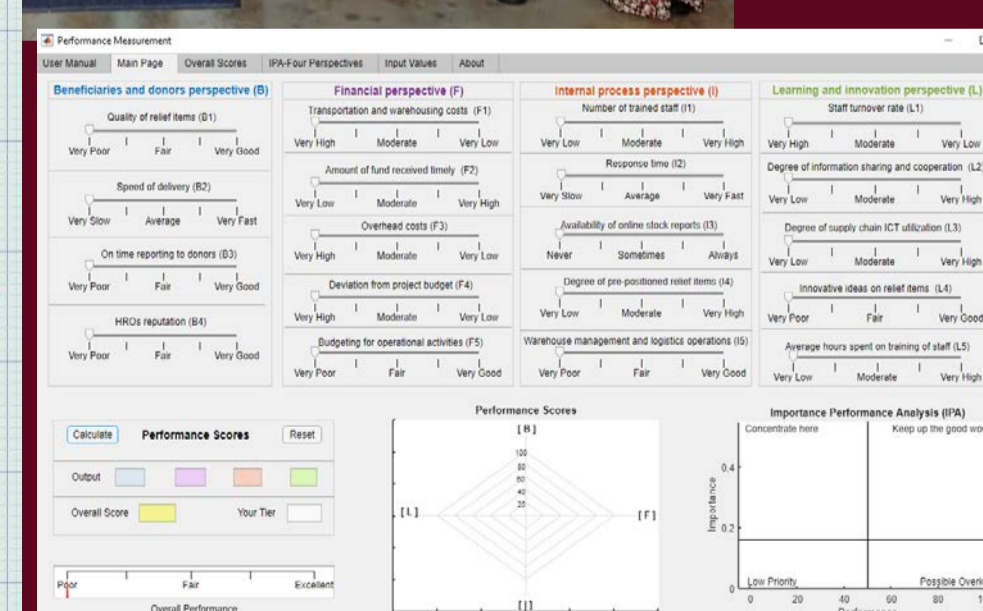
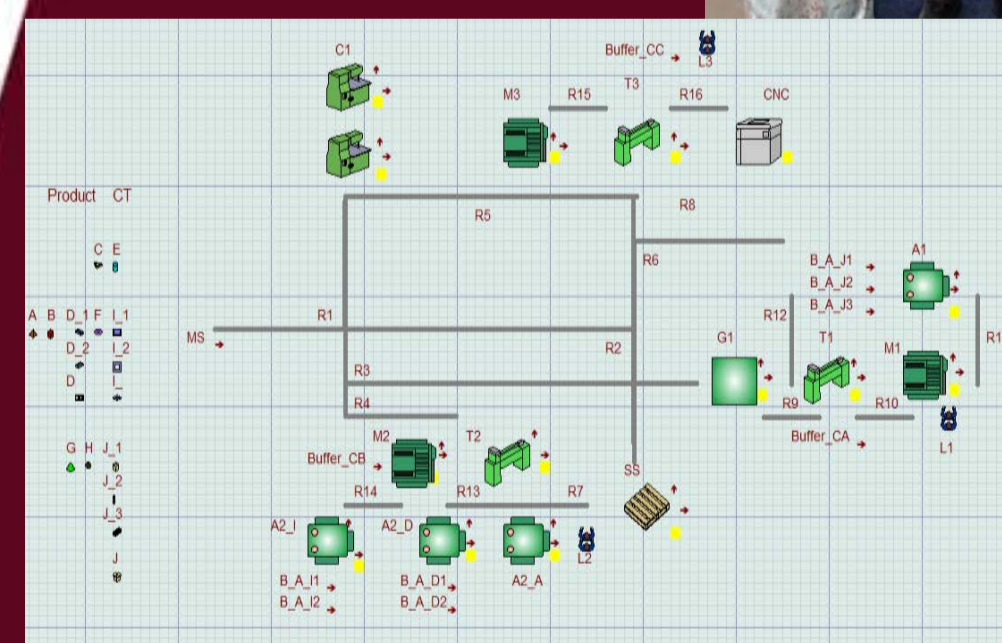
Dr. Azanizawati Ma'aram
niza@utm.my

Dr. Jafri Mohd Rohani
jafrimr@utm.my

Dr. Mohd Firdaus Mohd Taib
firdaustaib@utm.my

Dr. Rozlina Md Sirat
rozlina@utm.my

Pn. Wan Nazdah Wan Hussin
wnazdah@utm.my



Innovative • Entrepreneurial • Global